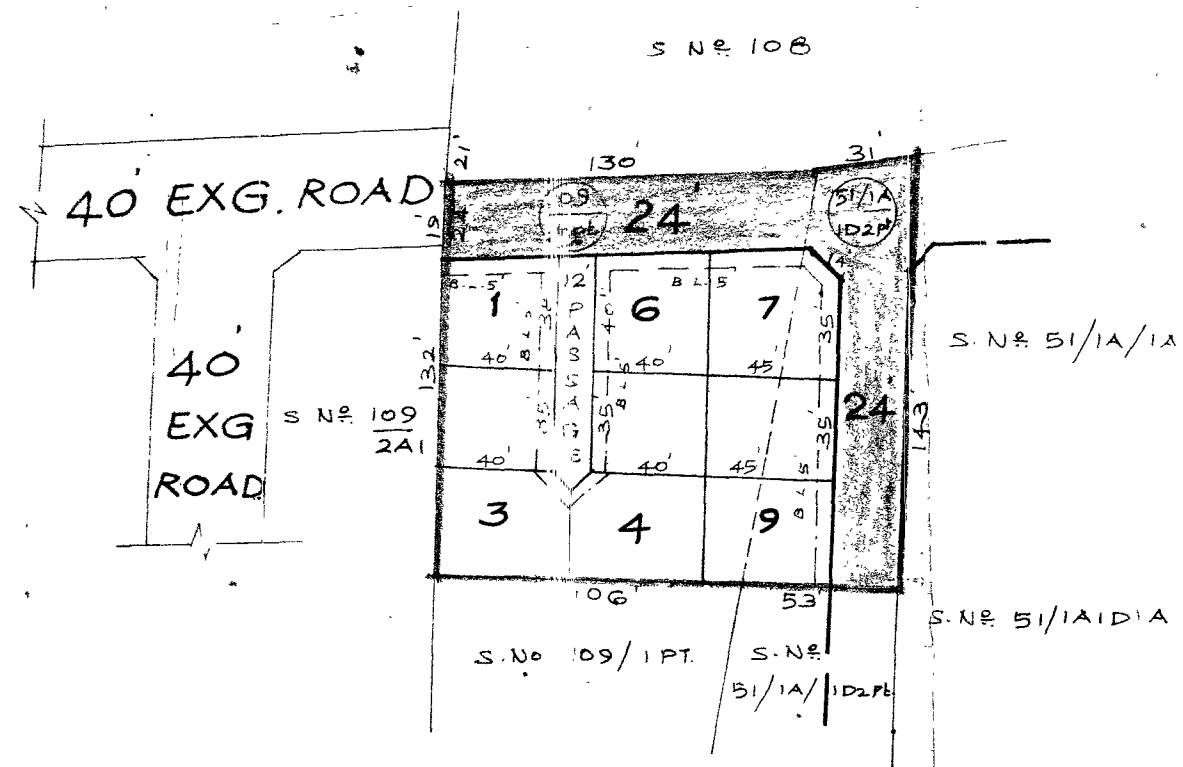





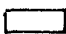
TOTAL EXTENT [0.50 AC.] : 2023 M.<sup>2</sup>  
 ROAD AREA : 621 M.<sup>2</sup>  
 N<sup>o</sup> OF PLOTS : 9



LEGEND

-  SITE BOUNDARY.
-  EXISTING ROAD.
-  PROPOSED ROAD.

NOTE

1. SPLAY 10 X 10
  2. MEASUREMENTS INDICATED ARE EXCLUDING SPLAY DIMENSIONS.
-  ROAD AREA WERE ALREADY HANDED OVER TO LOCAL BODY VIDE GIFT DEED DOC. N<sup>o</sup>. 1860/2001 DATED. 18-7-2001

P.P.D No. 47 T.C.  
 L.O 2001  
**APPROVED**  
 VIDE LETTER N<sup>o</sup> : LI/24821/2001  
 DATED : 20/3/2001  
OFFICE COPY  
 FOR MEMBER SECRETARY  
 CHENNAI METROPOLITAN  
 DEVELOPMENT AUTHORITY.

PERUNGUDI, TOWN PANCHAYAT

LAYOUT OF HOUSE SITES IN S. N<sup>o</sup> 109/1 PL., OF PERUNGUDI VILLAGE & S. N<sup>o</sup> 51/1A/1D2 PL., OF SEEVARAM VILLAGE.  
 SCALE : 66 FEET TO AN INCH.

